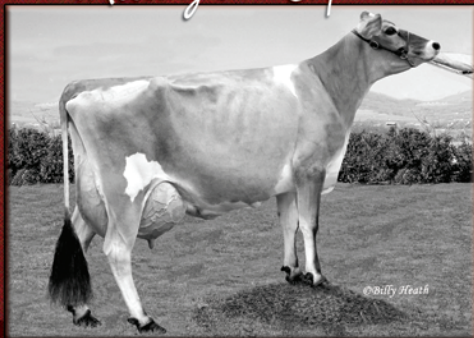


HALLMARK

Meeting our Expectations



Schultz Hallmark Chill, E-94%

3-0 305 19,520 4.2% 816 3.5% 678 98DCR

Her daughters in the herd:

A P9 "Mygent" and a P7 "Trail Blazer."

Sire: Schultz Brook Hallmark

Dam: Schultz Winkler Chill, E-90%

Next dam is a VG-88% "Berretta."

From the same family that produced Schultz Barber Chill, E-90%.

HUFFARD DAIRY FARMS

James S. Huffard III Email: hdfjersey@earthlink.net

165 Huffard Lane, Crockett, Virginia 24323

Barn: 276/686-5201 or 276/686-5838

Website: <http://huffard.usjersey.com>