

Brotherly Love

Both with PTAs over 1,000M.

29JE3360

Schultz Dudley Restore-ET

USDA (8/08) +1,703M, +38F, +42P,
+\$395CM, +\$417NM, +\$449FM

JPI +198 Type +1.2

- 4th for Somatic Cell Score
- 5th for Fluid Merit Dollars
- 10th PTA Milk

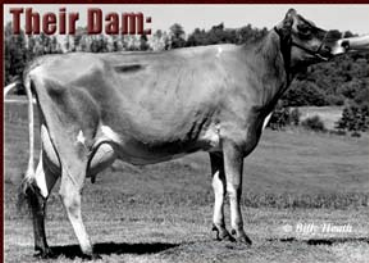
*Semen available from
ABS Global on both bulls.*

29JE3252

Schultz Declo Rescue

USDA (8/08) +1,043M, +14F, +27P,
+\$255CM, +\$267NM, +\$283FM

- 261 Excellent or Very Good Daughters



Schultz Hallmark Renae, E-90%
6-7 305 18,520 4.3% 801 3.6% 663 97DCR

HUFFARD DAIRY FARMS

James S. Huffard III

Email: hdfjersey@embarqmail.com 165 Huffard Lane, Crockett, Virginia 24323

Barn: 276/686-5201 or 276/686-5838 <http://huffard.usjersey.com>