

Ripe for the Picking

on November 7 in Louisville!



Selling: **Schultz Monte Pair, P8**

PA +384M, +19F, +13P, +\$219CM, +\$213NM, +\$213FM JPI +77
Due in March to "Headline." • Sire: Three Valleys Country Monte-ET

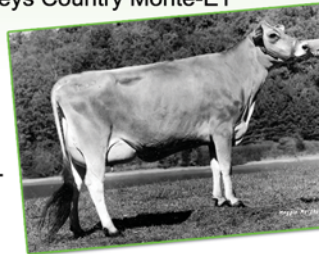
Dam: **Schultz Jackson Pear, E-90%** JPI +100
3-2 296 21,590 4.5% 975 3.4% 731 104DCR
Projected over 22,000M ME at 4-1

Grandam: **H&B Declo Pare-ET, VG-88%**
4-6 305 18,210 4.4% 808 3.8% 696 97DCR
• Five brothers in A.I. including H&B Alf Paragon-ET

The next two dams:

Salvation Brook Paramount, E-90% →

Salvation Berretta Plush, E-91%, with 23,740M and 788F actual at 3-0.



HUFFARD DAIRY FARMS "Pair" is owned with
Jim's son, Trey.

"Production-Pure Genetics Since 1929"

James and John Huffard



165 Huffard Lane, Crockett, Virginia 24323 Barn: 276/686-5201 or 276/686-5838
Email: hdfjersey@embarqmail.com <http://huffard.usjersey.com>